

SP High-Speed Series NVMe M.2 SSD and SATA Duplicator 1 to 1 (SP151)



Calificación: Sin calificación

[Haga una pregunta sobre este producto](#)

Descripción

PCIe / SATA M.2 Duplicator 1-1 (SP151)

- Speed transfers up to 24 GB per minute.
- Native support NVMe and SATA protocols.
- Supports 1-1 cross-interface copy.
- Supports hot swapping.
- Systems & files copy mode supports Windows (FAT16/32/64, NTFS), Linux (ext2/ext3/ext4) and Mac (HFS, HFS+, HFSX).
- Data Sanitization: Quick Erase, Full Erase, Secure Erase and DoD Erase.
- Supports M key and B+M key for M.2 SSDs; SATA devices.



- [Product Description](#)
- [Features](#)
- [Specification](#)
- [Comparison Chart](#)
- [Video](#)

Product Description

SP151 is a professional NVMe M.2 SSD and SATA duplicator. Native support NVMe and SATA protocols enables cross-signal and cross-interface duplication. It is designed specifically for small volume users and adopts high level FPGA closed platform design, which can eliminate the possibilities of virus infection completely.

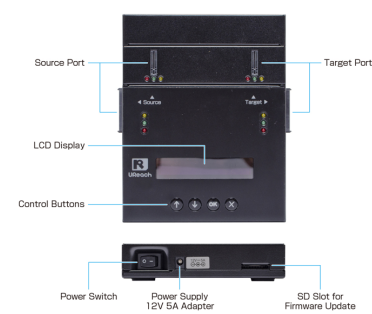
All U-Reach PCIe duplicator supports easy Plug and Copy operation mode. It completes duplication in 3 steps: power on, plug in, and press OK.

It provides four copy modes: quick smart copy, all partitions copy, percentage copy and whole copy that all meet different duplication task requirements. The quick copy mode copies data and skips blank area. NTFS, Linux (Ext2/Ext3/Ext4), FAT/FAT32/exFAT and Mac (HFS, HFS+, HFSX) formats can all be supported with quick copy mode.

In addition, the SP151 has modular-designed M.2 ports effectively reduce downtime and is cost-effective for long-term ownership.

Features

Hardware Overview



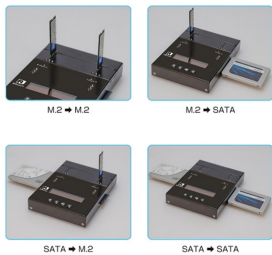
Supported Device



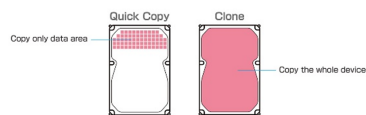
Easy Operation



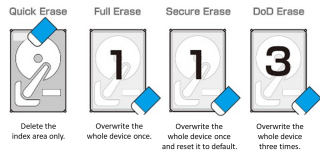
4 Copy Modes



Supports 2 Copy Methods

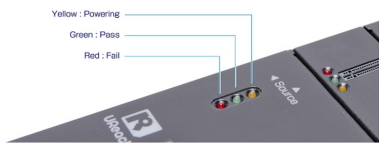


4 Erase Modes



Smart LED Indicators

3 color indicators shows real-time status.




Specification

			Model Target
Specification	Maximum Transfer Speed	24.0GB/min. (400MB/sec.)	SP151 1
	Capacity	*Actual performance is dependent on SSD transfer speeds*	
	Operating Type	Supports the latest market available capacity Designed support capability up-to 18TB+ Stand-alone, FPGA-based operation (Non PC-based)	
	Supported Languages	English, Japanese	
	LCD Display LEDs	Backlit Monochrome LCD Display 3 LED Indicators per Port: Yellow (Power), Green (Pass), and Red (Fail)	
Features	Control Panel	4 Push Buttons(?, ?, OK, ESC)	
	Copy Modes	Quick Copy (Systems & Files Copy), All Partition Copy, Whole Device Copy, Percentage Copy	
	Compare Function	Bit-by-bit data comparison	
Compatibilities	Sanitization Modes	Quick Erase, Full Erase, Secure Erase and DoD Erase	
	Compatible Devices	NGFF (M.2): 2230, 2242, 2260, 2280, PCI-e SSD (full and low	

Hardware specification	Supported Formats	profiles Quick Copy: FAT16/32/64, Windows (NTFS), Linux (Ext2/Ext3/Ext4), and Mac (HFS, HFS+,HFSX)
	Supported O/S	Whole Device Copy: All Formats, including proprietary formats All (Windows, Mac, Linux, and other stand-alone systems)
	Power Supply	12V 5A Power Adaptor
	Working Temperature	5°C ~ 45°C (41°F ~ 113°F)
	Storage Temperature	-20°C ~85°C (-4°F ~ 185°F)
	Working Humidity	20% ~ 80%
	Storage Humidity	5% ~ 95%
	Product Dimensions (cm)	18 x 15.6 x 3.4
	Weight (kg)	1.2
	Certifications	FCC, CE, RoHS

Comparison Chart



M.2 SSD Duplicator / Eraser Comparison Chart



Series / Model	PE	PE-H	PV	PX		SP	
				PX400	PX800	SP101	SP151
Ports	1-5; 1-10; 1-15; 1-20		1-11; 1-23	1-3	1-7	1-1	
Speed (GB/min)	24.0	60.0	12.0	9.0	12.0	9.0	24.0
Supported Protocol							
Supported Interface	Direct	M.2	M.2	M.2	M.2 & SATA		
	Through Adapter	U.2, SATA, PCIE, MAC PCle SSD, BGA SSD	PCIE, MAC PCle SSD	PCIE, MAC PCle SSD	MAC PCle SSD, PCIE, mSATA, CFast		
Cross-Signal Copy		V	V	V	V		
Copy		V	V	V	V		
Full Erase		V	V	V	V		
Secure Erase		V	V	V	V		
DoD Erase		V	V	V	V		
Event Log Report		V					
SMART Info		V	Power Cycle, Power-on Hours, Temperature			V	
Image Management		V					

The Data Equipment Expert

Duplication / Inspection / Sanitization

www.ureach.eu

Video



